

God said, "See, I give you every seed-bearing plant that is upon all the earth, and every tree that has seed-bearing fruit; they shall be yours for food."

Genesis 1:27-29



Clergy Voice

A PUBLICATION OF TEMPLE ISRAEL
2324 Emerson Avenue South
Minneapolis, MN 55405-2695
612-377-8680
e-mail: hakol@templeisrael.com
www.templeisrael.com

AFFILIATED WITH THE
UNION FOR REFORM JUDAISM

Rabbis
Marcia A. Zimmerman
Alvin & June Perlman Senior Rabbinic Chair
Simeon I. Glaser
Jennifer S. Gertman

Cantors
Barry Abelson
Stephen H. Abelson

Executive Director
Miriam Seidenfeld
Chief Operating Officer
Myra Giesener

BOARD OF DIRECTORS

President
Sherri Feuer
Vice President
Alan Silver
Treasurer
Lennie Kaufman
Immediate Past President
Muffy Rudnick
Helaine Bolter
Roberta Bonoff
Mark Chodosh
Stephen Cohen
Sandy Donaldson
Sheri Fine
Andy Gellman
Stuart Goldenberg
Jeremy Hanson Willis
Mindy Isaacs
Howard Kaplan
Steve Levie
Richard A. Ross
Maggie Thurer



Rabbi Zimmerman

Dear Friends,

The beauty of Jewish text is that nothing, and I mean nothing, is taboo to talk about. Over the millennia, the rabbis debated issues such as business, sex, sexual

orientation, abortion and euthanasia. We come from a rich tradition in which our sages have discussed and debated everything because Judaism is not just a religion, but a way of life. To remain relevant in our daily lives, our texts and teachings wrestle with difficult moral and ethical issues. Discussions about money and finances are no different.

Judaism has a great deal to teach us about money – a subject that is often a source of anxiety and conflict. Our texts say that money itself is neither good nor bad. It is what we do with it, and the value we put on it, that makes money a source of good or evil.

The Talmud (Tamid 32b) tells a story of Alexander the Great, who placed his gold and silver on one side of a scale and a human eyeball on the other side. No matter how much gold or silver he piled on, the eyeball always outweighed it. The rabbis explained that since the human eye has unlimited desires, it will always be “heavier” and outweigh any riches pitted against it. The text raises the question: how do we find a sense of peace and satisfaction rather than an unadulterated desire for more?

We, as individuals, feel the enormity of a culture in which we are exposed to some 5,000 advertising impressions each day – from logos, to television ads, to billboards, and even to fundraising campaigns linked to “buying a product.”

As parents and grandparents, aunts and uncles, we often feel the enormity of the endless wants and requests we encounter from the

children in our lives. The fact is that they are growing up in a material world. Teens purchase \$100.6 billion of goods every year and yet only make \$5.6 billion in earnings. We have a generation of children and teens who care about the environment, the welfare of others and the prospects for their own futures. How do we teach them to make spending decisions that reflect their values?

A new program at Temple will open up the conversation within families around money. Nathan Dungan, the president and founder of Share, Save, Spend, will work with our 6th, 8th and 10th graders on identifying their values around sharing, saving and spending, and then on becoming intentional with their money choices. Nathan has already facilitated a wonderful discussion with the leadership at Temple to demonstrate his program. The conversation was vibrant with questions like: What are our personal and family values around money? How can we be intentional about what we do with our money? What does Judaism have to say about this?

I believe Temple is the place to facilitate difficult but necessary conversations. Share, Save, Spend will give children and families the tools to have their money decisions reflect their values and our Jewish values. As it says in Pirkei Avot (4:1), “Who is wise? The one who learns from all people. Who is wealthy? The one who is satisfied with their lot.” And I would add, “Who is fulfilled? The one who shares with others.”

B’virkat Shalom – With Blessings of Peace,

Rabbi Marcia A. Zimmerman
Alvin & June Perlman Senior Rabbinic Chair

INSIDE:

Clergy Voice 2
Strategic Plan Update 3
What’s Happening 4-5
B’nai Mitzvah 7
Lighting the Way 8
Taking Action 10
Sisterhood 11
Contributions 12-13
Sharing Our Lives 14
2011 Consecration
Class Photo 15



Temple Israel

STRATEGIC PLAN

IMPLEMENTATION UPDATE

Over the past six months, Strategic Plan Implementation Team Co-Chairs Stephen Cohen and Alan Silver have been laying the foundation for implementing Temple's ambitious strategic plan. The Implementation Team includes Temple President Sherri Feuer, Treasurer Lennie Kaufman, Rabbi Zimmerman and Executive Director Miriam Seidenfeld.

The Implementation Team and the Board of Directors have selected four initial Priority Focus Areas (PFAs) for the congregation: Education, Worship, Properties and Philanthropy.

While additional areas were identified as priorities in the strategic plan, these will be addressed at a later date.

Each PFA has been assigned a lay or staff leader who will oversee the action steps for achieving the short and long term goals for their area of focus.

The Lifelong Education PFA will be led by Maggie Thurer. Maggie and her team will work with Rabbi Gertman, our Temple educators and other education experts to create and recommend to the Board a model for lifelong education at Temple Israel – from ECC through adult education. The goal is to integrate education with worship, social action, leadership, technology, properties, governance, culture of philanthropy, and other aspects of Temple. The Lifelong Education PFA will also look at our existing educational facilities and work with the Properties PFA to determine needed changes.

Abbe Blacker and Howard Kaplan will lead the initial phase of the Worship PFA, and will conduct conversations and study groups to determine the needs and potential for a mid-size worship space. Also through the Worship focus area, our clergy

and congregation will continue to explore traditional and innovative ritual and music to create the most spiritually moving and participatory worship experiences.

As the Education and Worship teams progress, Properties PFA leaders Roberta Bonoff and Steve Levie will organize the process to begin development of a preliminary master design for any Temple facilities changes that will be required to implement the strategic plan. The Properties PFA will work in collaboration with Lifelong Education, Worship and other PFAs

to assess space and financial resource needs, along with other implementation priorities.

Temple's Development Director Jeri Glick-Anderson is leading the Culture of Philanthropy PFA, along with Foundation President Howard Zack and Temple Development Chair Sandy Donaldson. Jeri, Howard, Sandy, Foundation Board members and the Development Committee have begun to address the charge given by the

Temple community to develop a culture of philanthropy to inspire, teach, recognize and celebrate all forms and all levels of giving to Temple and to our Jewish future. Their initiatives to reinvigorate the Temple Israel Foundation and develop a comprehensive endowment and planned giving program are well under way.

Watch HaKol and E-News for more information about our progress and for ways to participate. If you have questions about the implementation of Temple's Strategic Plan, please contact our Executive Director, Miriam Seidenfeld, at miriam@templeisrael.com or 612-374-0305.

A Priority Focus Area (PFA) is an area identified in the strategic plan for implementation. Each focus area will be addressed at some point over the next five years. Working groups and task forces made up of lay leaders, congregants, clergy, outside experts and staff will be pulled together, as needed, to address questions, provide expertise and move implementation of a PFA forward. In most cases, working groups will work on a time-limited basis to address a specific question or need.

Worship Services

January Worship Services

Friday, January 6

First Friday: Three Options

- 6:00 p.m. • Erev Shabbat Services
• Tot Shabbat Service followed by a Pizza Dinner
• Study Session led by Rabbi David Wirtschafter

Saturday, January 7

9:00 a.m. Torah Study—Va-y'chi, Genesis 47:28–50:26

10:30 a.m. Congregational Shabbat Morning Service including the Bar Mitzvah of Simon Tolman followed by a Kiddush Luncheon

Friday, January 13

6:00 p.m. Carlebach Shabbat Service

Saturday, January 14

9:00 a.m. Torah Study—Sh'mot, Exodus 1:1–6:1

10:30 a.m. Congregational Shabbat Morning Service including the Bat Mitzvah of Andrea Seiler followed by a Kiddush Luncheon

10:30 a.m. Jewish Renewal Service

Friday, January 20

6:00 p.m. Nefesh Shabbat Service

Saturday, January 21

9:00 a.m. Torah Study—Va-eira, Exodus 6:2–9:35

10:30 a.m. Congregational Shabbat Morning Service followed by a Kiddush Luncheon

Friday, January 27

6:00 p.m. *Beyond Words: The Sublime Music of the Classical Cantorial Art* Shabbat Service

Saturday, January 28

9:00 a.m. Torah Study—Bo, Exodus 10:1–13:16

10:30 a.m. Congregational Shabbat Morning Service including the Bat Mitzvah of Carli Grossman followed by a Kiddush Luncheon

February Worship Services

Friday, February 3

First Friday: Three Options

- 6:00 p.m. • Heilicher Minneapolis Jewish Day School Erev Shabbat Services
• Tot Shabbat Service followed by a Pizza Dinner
• Study Session led by Rabbi Joseph Edelheit

Saturday, February 4

9:00 a.m. Torah Study—B'shalach, Exodus 13:17–17:16

10:30 a.m. Congregational Shabbat Morning Service including the Bat Mitzvah of Eliana Mei-Ling Crabb followed by a Kiddush Luncheon

Monday, February 6

7:00 p.m. Congregational Tu BiSh'vat Seder

Friday, February 10

6:00 p.m. Carlebach Shabbat Service

Saturday, February 11

9:00 a.m. Torah Study—Yitro, Exodus 18:1–20:23

10:30 a.m. Congregational Shabbat Morning Service followed by a Kiddush Luncheon

10:30 a.m. Jewish Renewal Service

Friday, February 17

6:00 p.m. Nefesh Shabbat Service

Saturday, February 18

9:00 a.m. Torah Study—Mishpatim, Exodus 21:1–24:18

10:30 a.m. Congregational Shabbat Morning Service including the B'not Mitzvah of Addison Gleekel and Raye Gleekel followed by a Kiddush Luncheon

Friday, February 24

6:00 p.m. *Beyond Words: The Sublime Music of the Classical Cantorial Art* Shabbat Service

Saturday, February 25

9:00 a.m. Torah Study—T'rumah, Exodus 25:1–27:19

10:30 a.m. Congregational Shabbat Morning Service followed by a Kiddush Luncheon

Call for Candidates for Temple Israel Board of Directors

Applications due Friday, January 6

Contact Nominating Committee Chair Howard Kaplan, at 612-868-7071 or hlkap@aol.com, for information.

Torah Study

Every Saturday, 9:00-10:15 a.m.

Join an instructive and spirited discussion of the week's Torah portion led by our rabbis. Gain a better understanding of Torah and its relevance to contemporary life through study and dialogue. Open to all. Come when you can.

Jewish Memory Loss

Caregiver Support Group

Wednesdays, January 11 & February 8, 1:00-2:30 p.m.

Are you caring for someone who is experiencing Alzheimer's or another memory loss disorder? Support and information can be so helpful during this challenging and stressful time. If you are interested in this group please contact Barbara Rudnick, JFCS Program Manager for Family Life Education, at brudnick@jfcsmpls.org or 952-542-4825. Pre-registration is required. All calls are confidential. Co-sponsored by Temple Israel and Jewish Family and Children's Service of Minneapolis.

What's Happening...

Rabbi Glaser Performs at the Minneapolis Jewish Humor Festival

Sunday, January 15, 7:30 p.m. at the Sabes JCC

Call 952-381-3499 to reserve your tickets for *Telling Tales Out of Shul – An Evening of Laughter, Music and Observations*.

Food for Thought:

Downtown Jewish Study Group

Monday, January 23, 12:15 p.m.

755C Hennepin County Government Center

Work downtown? Spend your lunch hour studying with the Downtown Jewish Study Group. This session will be led by Rabbi Glaser. For more information, contact Wendy at 612-374-0344 or wendy@templeisrael.com.

Kabbalah Sparks

Mondays, January 23 and February 27, 7:00 p.m.

Rabbi Glaser leads this monthly study and meditation on Kabbalistic themes. All inquisitive seekers are welcome.

Volunteer for Temple Israel's Homeless Shelter

Sunday, February 5 - Sunday, February 12

Temple Israel will host families through our partnership with Families Moving Forward (FMF) this February. We invite all of our volunteers from previous hosting weeks to join us. If you have not had the opportunity to volunteer during our FMF hosting, now is your chance! We need help cooking, serving and dining with our families; playing with and entertaining the children; helping with homework, packing lunches; and one guy and one gal to stay overnight each night during our hosting session at Temple, serve breakfast and see our guests off each morning. To sign up for this wonderful mitzvah, please visit the Calendar of Events page on our Temple web site, locate this event and follow the link to VolunteerSpot.com. Questions? Contact Mark Ratner at 612-272-7060 or mratner@hotmail.com.

Volunteers are required to participate in a training session prior to volunteering at Temple Israel's homeless shelter. The training includes information about the Families Moving Forward program, the culture of poverty, the causes and effects of homelessness, the impact on children, and the guidelines for interacting with FMF guests. The training session will be offered on Sunday, January 29th from 9:30 to 11:00 a.m. Reservations are not necessary for the training session.

Tu BiSh'vat Seder

Monday, February 6, 7:00 p.m.

Celebrate the Jewish New Year of the Trees at a congregational Tu BiSh'vat Seder. Embrace Jewish wisdom, stories, music and rituals about our natural world. Delight in delicious foods including the traditional fruits, juices and nuts of the Tu BiSh'vat Seder ritual. Please RSVP by using the "Member Login" section of our website, or by contacting Regan at 612-374-0314 or regan@templeisrael.com.

Hosts Needed for Interfaith Seder

Sunday, March 18, 1:00 p.m.

Since 1981 Temple Israel has invited area houses of worship to be our guests at the Liebenberg/Knelman Interfaith Seder, free of charge. On Sunday, March 18th neighbors and friends from area churches, mosques, and other worship communities will gather at Temple Israel as we host our 31st Annual Interfaith Seder. We hope you will consider hosting a table of guests as we share the rituals of Passover and sample some traditional Passover foods. The event is funded by the Knelman Family Fund for Interfaith Relations, dedicated to the idea of understanding through interfaith dialogue and sharing. If you, your spouse and/or teenage family members would like to help host our guests at this cherished event, please contact the Interfaith Seder Chair Len Kennen at 952-475-4030 or interfaithseder@templeisrael.com.

Save the Date PURIM 2012

Purim Shpiel and Service

Sunday, March 4, 10:30 a.m.

Family Purim Carnival

Sunday, March 4, 11:30 a.m. - 1:00 p.m.

Join us at the 2012 TIPTY Purim Carnival for food, games and prizes. It's a treat for the whole family! Tickets for games and food can be purchased the day of the carnival. Calling all TIPTYites...we need your help setting up the carnival. Email TIPTY_Advisor@templeisrael.com for more information, or check the TIPTY Facebook page.

**Watch your March HaKol
for more details.**

Scholarship Information

Scholarships for summer camps and trips to Israel are available for Temple Israel members. For additional community scholarship information or more detailed information, please contact each individual organization directly.

Temple Israel

Deadline: February 1, 2012

Contact: Barb Nesheim at 612-374-0315 or bnesheim@templeisrael.com.



Jewish Family and Children's Service (JFCS)

Deadline: March 26, 2012

Contact: Laurie Moser at 952-542-4843 or lmoser@jfcsmpls.org.



Minneapolis Jewish Federation

Deadline: Thursday, April 5, 2012

Contact: Wendy Clyman at 952-417-2354 or wclyman@mplsfed.org.



Upcoming Youth and Education Dates for:

JANUARY

- 1-3** No Religious or Hebrew School: Winter Break
- 7/8** 4th Grade Family Education Program
- 8** 4.5.6 Youth Group: Snow Tubing 11:30 a.m. - 3:30 p.m.

8th Grade ONLY Family Education 12:00 - 3:00 p.m. No 7th Grade Class Today
- 11** 9th Grade Kallah at Temple Israel

10th Grade Confirmation Class
- 14-16** No Religious or Hebrew School: Martin Luther King Jr. Day Weekend
- 16** ECC Closed: Martin Luther King Jr. Day
- 18** 10th Grade Confirmation Class
- 21** Religious School Pre-Kindergarten Class Meets
- 22** 7th/8th Grade Program

8th Grade: Parent/Teen Program
- 22-24** NFTY North Winter Kallah Grades 9 - 12
- 25** 10th Grade Confirmation Class Family Education and Trip Orientation; Parents required to attend with Confirmation students.

FEBRUARY

- 3** Heilicher Minneapolis Jewish Day School Shabbat Service and Dinner
- 5** 4.5.6 Youth Group: Sky Zone 11:30 a.m. - 2:30 p.m.

7th Grade Program: Family Mitzvah Day Program No 8th Grade Class Today
- 10-12** 9th Grade Kallah at Camp TEKO
- 10-13** 10th Grade Confirmation Class Trip to Washington, D.C.
- 12** 2nd Grade Family Education Program: Alef Round-Up All 2nd Grade Families attend on Sunday

7th/8th Grade Program

7/8 Youth Group: Fun Event (TBA) 2:30 - 5:30 p.m.
- 18-21** No Religious or Hebrew School: Presidents' Day Weekend/ Mid-Winter Break
- 20** ECC Closed: Presidents' Day
- 22** 10th Grade Confirmation Class
- 26** 7th/8th Grade Program 1:00 - 3:00 p.m.

Temple Israel Religious and Hebrew Schools are beneficiaries of the Minneapolis Jewish Federation



Simon Joseph Gruen Tolman
January 7, 2012

Va-y'chi Simon is the son of Bonnie Gruen & William Tolman; grandson of Erich & the late Joan Gruen and Sharlene & Stephen Tolman; brother of Claire and Sarah. Simon enjoys playing baseball, basketball and soccer. He took great pride in playing trombone in the 6th Grade Graduation Shabbat Service at Temple Israel. At Lake Harriet Community School, Simon enjoys playing trombone in the school jazz band and participating in debates in his social studies class. When asked about his upcoming Bar Mitzvah, Simon said, "I'm nervous but very excited for my big day. I'm glad I can share what I've learned with all my family and friends."



Andrea Seiler
January 14, 2012

Sh'mot Andrea is the daughter of Alexis & Scott Seiler; granddaughter of Suzanne Prass & the late David Prass and Robin & Stuart Seiler; sister of Abigail, Leo and Lucy. Andrea enjoys art, skiing, dance, writing, reading and drawing. She takes pride in attending OSRUI summer camp. Andrea's favorite subjects at Anthony Middle School are English, math and band. She is on the honor roll and was named student of the month. When asked about her upcoming Bat Mitzvah, Andrea said, "This has been a big part of my life and I am very excited to see the result of many years of hard work."



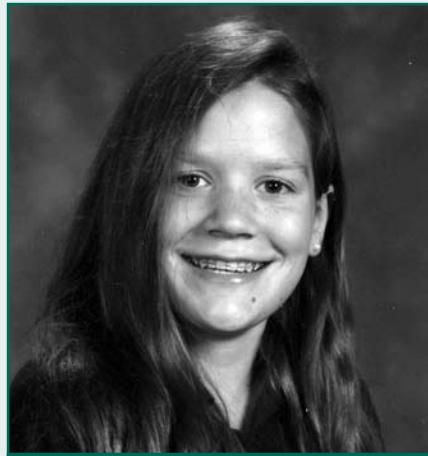
Carli Ayla Grossman
January 28, 2012

Bo Carli is the daughter of Melissa & Steve Grossman; granddaughter of Arlis & Erv Grossman, Julie & Robert Dreidink and Andrea & Rabbi Brooks Susman; sister of Andrew. Carli enjoys gymnastics, participating in competitive cheerleading at Planet Spirit, volunteering at STEP and at Jenny Lind Elementary in North Minneapolis. She takes pride in attending Herzl Camp in the summer. Her favorite subjects at St. Louis Park Junior High are science and math. When asked about her upcoming Bat Mitzvah, Carli said, "I'm excited to share this special day with my family and friends."



Eliana Mei-Ling Crabb
February 4, 2012

B'shalach Eliana is the daughter of Joel Crabb & Rachel Schalet Crabb; granddaughter of Helen & Phil Schalet and Ron & Nancy Crabb; sister of Alistair Eitan Crabb. Eliana enjoys natural and animal science, fishing, drawing, skiing and reading. When she grows up Eliana wants to become a marine biologist. Her favorite subjects at Minnetonka Middle School East are science and art. When asked about her upcoming Bat Mitzvah, Eliana said, "I am looking forward to graduating from Hebrew School and becoming a Jewish adult!"



Addison Elizabeth Gleekel
February 18, 2012

Mishpatim Addison is the daughter of Beth & Tony Gleekel; granddaughter of Jean & Tom Brozic and Mimi & Sherry Gleekel; sister of Isabael and Ben. Addie enjoys playing hockey and soccer, and creating art. She takes pride in celebrating Rosh HaShanah with her family. She wants to become an interior designer when she grows up. Addie's favorite subjects at Breck School are math and Chinese. When asked about her upcoming Bat Mitzvah, Addie said, "I look forward to celebrating this special day with my cousin Raye, family and friends."



Raye Sara Gleekel
February 18, 2012

Mishpatim Raye is the daughter of Karen Schneider & Peter Gleekel; granddaughter of the late Marilyn & the late Herb Schneider and Mimi & Sherry Gleekel; sister of Cade. Raye enjoys playing soccer and hockey. Her favorite subjects at The Blake School are English, social studies and French. She was on the 6th and 7th grade honor rolls. When asked about her upcoming Bat Mitzvah, Raye said, "I am so excited to share this day with my cousin Addie, and my family and friends."

What will my legacy be?

An interview with Rachael Freed



Rachael Freed lighting Shabbat candles

Rachael Freed has an important Jewish story to tell. Her story is one of discovery, reconnection, spirituality and joy.

As the founder of Life Legacies, Freed has given much thought to the question, "What will my legacy be?" The answer, she says, is rooted in stories of the past, living a life of significance in the present, and passing on wisdom and blessings for the future.

"When we come to the end of life, we want to feel at peace with how we lived our lives and the values we are passing forward to the generations ahead," said Freed, who has included the Temple Israel Foundation in her estate plan.

"When we admit that we are mortal and that we will die one day, then we can articulate what matters. It reminds us to take the time to pass on our values through our words, our actions and our philanthropic decisions. It is important to discuss what we have done, and why, to our children and grandchildren."

For years, Freed has helped people create spiritual-ethical wills. She found that people are very willing to pass on beliefs and family traditions. "The one thing we don't talk about is money. It is still a powerful taboo subject," she said. "Yet the choices and decisions we make with our money are informed by our values, and charitable gifts express what matters most to us."

Raised in a largely non-observant household in Minneapolis, Rachael grew up at Temple Israel but with little connection to the spiritual aspect of Judaism. She developed a passion for social justice and in 1966 went to Tunisia as a Peace Corps volunteer. After returning home, she raised a family and became a successful professional, but there was a void in her life.

A rebel even in mid-age, she took up a rabbi's challenge to light Shabbat candles because "God commands women to do so." She began the ritual saying, "Thank you God for making me a Jewish woman and giving me the responsibility to welcome the Sabbath." Some months later, she said, "I realized that for the first time in my life I was in dialogue with God."

Freed guides people to clarify their values and choices and to write legacy letters to communicate their life learnings, blessings, end-of-life and financial decisions. "You want your loved ones to know what matters to you and to understand how your decisions reflect your values and beliefs," she said.

Freed is doing this herself now. Today, she attends Torah study regularly, is leading a project to record the stories of our congregants, the Legacy Project, and co-chairs the Adult Learning Committee. She has left a gift to the Adult Learning Fund of the Temple Israel Foundation in her estate plan. Her children and grandchildren know she loves Judaism. She is passing this love and the traditions to them and to future generations with her words, her teachings, and her planned gift to Temple.

Teens & Giving: A Recipe for Success

Studies have shown that teens who are altruistic, giving of their time and resources to help others, tend to be happier and better adjusted than their peer group.

- + Altruistically motivated teens are **3 times happier**
- + **Generous behavior** reduces adolescent depression and suicide risk
- + Teens **who volunteer** are less likely to fail a subject in school, get pregnant or abuse substances
- + Teens who volunteer are more **socially competent** and have **higher self-esteem**

Source: Greater Good Science Center, University of California-Berkeley

TOP TEN MYTHS ABOUT PLANNED GIVING

#7: It is too expensive to write or change my will.

Having a will, health care directive and power of attorney are important investments. Working with an attorney or using online tools, the process can be quite affordable. Cost generally increases with the complexity of your estate. Making a beneficiary designation on an IRA, 401K or insurance policy costs nothing but the time it takes to contact your plan administrator. Make sure your assets will be distributed the way you want them to be, reflecting the values you live by. Include the Temple Israel Foundation in your estate plan to support the wonderful Temple community we have now and create a vibrant Jewish tomorrow. For your beneficiary, please use the Temple Israel Foundation, 2324 Emerson Avenue South, Minneapolis, MN 55405 - Tax ID # 41-1769841.

For more information, please contact Jeri Glick-Anderson at 612-374-0302 or jeriga@templeisrael.com.

Healing Prayer Added to Daily Service

The *Mi Shebeirach* healing prayer will be recited each night, Saturday-Thursday, during the 6:00 p.m. Daily Chapel Service. Reciting the *Mi Shebeirach* for those in need of healing, care and compassion is an expression of the essence of Judaism. The *Mi Shebeirach* prays for physical as well as spiritual healing, asking for blessing, compassion, and strength, within a community of others. It is not a personal prayer, but a communal one. Please join us as we offer this prayer of healing each evening.

Temple Israel's
Early Childhood Center
provides fun, hands-on, educational experiences
for children 16 months-Pre-K.



Registration is now under way for
the 2012-13 school year.

Please contact ECC Director Trish Mintz at
612-374-0334
for more information or to set up a tour.



Taking Action

Celebrating the spirit of community and honoring the mitzvah of **ma'akhil re'evim, feeding the hungry.**



Temple Israel joined with Jewish communities around the country on November 6th for the second annual American Jewish World Service (AJWS) Global Hunger weekend; a nationwide weekend of solidarity, learning & action to help alleviate hunger worldwide. Taking place in the weeks prior to Thanksgiving, we linked our efforts to the pursuit of global food justice with the season of gratitude. Kids Against Hunger brought their mobile warehouse on wheels to Temple Israel.



Religious School parents and students, members of our Sisterhood and Men's Club, congregants and guests joined together to accomplish something BIG!



Nearly 300 volunteers packaged 27,136 meals during six different shifts at Temple Israel throughout the day -- almost three times the original goal of 10,000 meals!



One third of the meals packaged will be sent locally to S.T.E.P. (St. Louis Park Emergency Program). The rest of the packaged food will be sent to the Horn of Africa for women and children who are crossing the border into Kenya to the Dadaab UN camps.



Special thanks to Heidi Tarshish for the immense amount of planning and organizing it took to make this such a successful project!



Sisterhood Wishes you a Happy 2012

Here's what's on our calendar:

Full Board Meeting

St. Louis Park Byerly's Community Room

Sunday, January 15, 9:30 - 11:30 a.m.

Calling all Sisterhood Board members. Join us for our breakfast meeting and find out all the good things that we've got going on. Please RSVP to Betsy Michel at 763-577-9698 by January 10th.

A Chai Tea at Knollwood Place

Sunday, January 22, 2:00 - 3:00 p.m.

Temple Israel Sisterhood and the Sholom Community Alliance are hosting a Chai (High) Tea for the residents at Knollwood Place. Come have tea and cookies, visit the residents and hear the wonderful music sung by the Minnesota Jewish Chorale. All ages are welcome to this event, bring a friend or family member. Please RSVP by January 15th to Sheri Yarosh at sheriyaarosh@yahoo.com.

Watch the film "Gloomy Sunday" in Temple's Auditorium

Monday, January 23, 7:00 - 9:30 p.m.

Gloomy Sunday, winner of several major German film awards, is a story of love and fate inspired by actual events during the Holocaust.

New Member Brunch

Sunday, January 29, 9:30-11:30 a.m.

Are you a new member of Sisterhood or of Temple Israel? We'd love you to know more about what Sisterhood is and what we do. Please join us for brunch and meet some of the best friends you didn't know you had! Please RSVP to Harriette Peterson at 763-537-5155 or harriettepeterson@hotmail.com.

Calling all Hamantaschen Lovers and Bakers

It's time to order your Hamantaschen!

Celebrate Purim this year with freshly baked Hamantaschen from the Sisterhood bakers. Each pre-ordered dozen is only \$12 and half dozen is \$7. Extras will be available for \$15 a dozen while supplies last, and they won't be around long. Get your pre-orders in by Friday, February 17th and party Purim style. Hamantaschen orders can be picked up at the Sisterhood Gift Shop on Sunday, February 26th, starting at 1:00 p.m. and on Monday, March 5th from 4:00 - 7:00 p.m. Sorry, we can't mail or freeze orders for later pick-up.

2012 Temple Israel Sisterhood Hamantaschen Order Form

Please return this form along with your payment to
Susan Levy Cohn, 17125 32nd Avenue North, Plymouth, MN 55447.

Kol Isha

Sisterhood's Multi-Generational Winter Retreat at the Marriott Southwest

Friday, Feb. 3 at 5:00 p.m. - Sunday, Feb. 5 at 12:00 p.m.

Join us for a weekend led by Rabbis Zimmerman and Gertman, and in the good company of the women of Sisterhood. We promise that you'll meet new people and will find your smile as we play, pray and take a well-deserved break from our busy lives. Less oy, more joy. Registration fee is \$325 per person/double occupancy, \$425 single occupancy. There is an additional \$36 fee for non-Sisterhood members. Partial scholarships are available and are fully confidential. Questions? Contact Kol Isha coordinators, Julie Zimmerman Berg at 952-926-9311, Liz Mack at 952-942-5912 or Sue Tish McMorris at 612-554-4116.

Game Day at Temple

Sunday, February 12

Watch E-News for more details.

Garage Sale Steering Committee Meeting

Sunday, February 26, 12:00 - 1:30 p.m.

Join us for the first steering committee meeting for the 25th Annual Sisterhood Garage Sale.

Baking Day Coming Right Up

Have you ever wanted to learn just how Hamantaschen are made? Do you enjoy bonding with women in our community? Put on your aprons and come bake with us on Sunday, February 26th from 9:00 a.m. - 3:00 p.m. Whether you like to roll, fill, pack or generally organize, laugh and schmooze, bring a friend along or make new ones in Temple's kitchen. Your helping hands provide a mitzvah to the recipients of these delicious treats. Call Susan Levy Cohn at 763-475-0644 to schedule a shift or for more information.

Please make your check payable to Temple Israel Sisterhood.

Pre-order Pricing: \$12 per dozen and \$7 per half-dozen

Name _____

Phone _____

E-mail _____

Poppyseed

Mixed Fruit

Apricot

Chocolate

How many dozen? _____

How many dozen? _____

How many dozen? _____

How many dozen? _____

½ dozen? _____

½ dozen? _____

½ dozen? _____

½ dozen? _____

Total dozen _____ Total ½ dozen _____

Sharing Our Lives

January Anniversaries

5 th	Erica Webb-Belzer & Bob Belzer	1/18
5 th	Laurie & Will Young	1/3
10 th	Marnita Schroedl & Carl Goldstein	1/26
15 th	Monique & David Bush	1/19
15 th	Joan Schwartz & Bruce Rubinger	1/11
25 th	Trudy & Steve Weisberg	1/18
55 th	Marcia & Don Tuberman	1/13

February Anniversaries

15 th	Jan & Daniel Parker	2/7
15 th	Sharon & Lee Salz	2/16
25 th	Dodie & Bob Halvorsen	2/7
30 th	Jerelyn & Kenneth Levinson	2/6
35 th	Marlene & Tom Moscoe	2/27

In Memory

Condolences to our Temple families who have recently lost a loved one.

Jeffrey Alan Belzer, *Husband of Gloria Belzer, Brother of Judi Belzer (Jerry Waldman) and Dr. Michael (Mick) Belzer (Ellyn Wolfenson)*

Joan Binder, *Wife of Jay Binder, Mother of Jill (Bob) Edelstein and Grandmother of Jessi (Jeff) Heidelberg*

Ilse R. Brauer, *Mother of Frances Laven*

Judith Lewin Chauss

Ruth Finn, *Mother of Michael (Debbie) Finn, Jeff Finn (Bonnie Benowitz) and Cindy (Doug) Kanter and Grandmother of Andy and Libby Finn, Jodi Finn, Amy Finn, Steven Finn, Daniel Kanter and Jonathan Kanter*

Hazel Garner, *Sister-in-law of Frank & Shilrey Garner*

Marian Rose Halpern

Anne P. Herman, *Sister-in-law of Phyllis Laiderman*

Dennis S. Hymanson, *Husband of Joan Hymanson, Father of Lainie Lehman and Grandfather of Samantha and Jake*

Shirley Morris, *Mother of Sanford Morris (Myrna Pinto)*

Jim Nash

Inez Rickel, *Mother of Carol Meshbesh (Archie Givens)*

Mazel Tov To...

- **Sister Marge Boyle** for her interfaith work with Rabbi Zimmerman at the Dialogue on Interfaith Learning and Friendship event held at the Church of St. Olaf.
- **Diane Coplan Donohue & Mike Donohue** on the birth of their twin grandsons, Carter Michael Kyte and Mason David Kyte, on November 28, 2011. Carter and Mason are the sons of Heather & Chris Kyte.
- **Jim Gainsley**, who was elected chairman of the St. Louis Park Board of Zoning Appeals.
- **Carly & Howie Hoffman** on the birth of their daughter, Maya Grace, on November 5, 2011. Maya is the granddaughter of Ellyn Wolfenson & Mick Belzer, Bob Stein, and Barb & Earl Hoffman; and the great-granddaughter of Sandy & Marv Wolfenson, the late Molly & Ben Stein, the late Harold & Leah Davis and the late Mary & Albert Hoffman.
- **Drew Levin**, whose Turkey-To-Go business was featured in the November 11th Star & Tribune business section. Starting with the State Fair booth, Drew and his business partner, Dan Perkins, have grown the business to include a food truck in Minneapolis, a concessions booth at Target Field, a skyway food court restaurant in St. Paul and a Minneapolis restaurant that will open in January.
- **Jeff and Cathy Molever** on the engagement of their daughter, Jamie Molever, to Eric Greenspan. Jamie is the granddaughter of Norlie Feinstein, Joy Molever and the late Shirley Feinstein and Irv Molever. Eric is the son of Marilyn Springer, Mike and Joyce Greenspan. A May 2012 wedding is planned in Palm Springs.
- **Ben Stein**, who was accepted into the University of Minnesota School of Dentistry for the 2012 school year. Ben is the son of Bob Stein, Ellyn Wolfenson & Mick Belzer.
- **Sue Zelickson**, on the success of inaugural The Charlie Awards, a new Twin Cities event, which she conceptualized and organized to honor the best restaurants, staff and menu items from around the Twin Cities.

New Members

Jared Altschul

Jessica & Adam Birnbaum

Aaron Meyers

Naomi Perman & Ken Kohnstamm

Michelle Sandler & Lawrence Becker

Camp TEKO 2012

**A summer of FUN...
...a lifetime of memories**

Over 40 years of Jewish camping experiences, friendship and fun!



2012 Summer Dates

Day Camp Tzofim and Giborim – Entering Grades K-6
 Session Alef June 18-June 29
 Session Bet July 2-July 20
 Session Gimmel July 23-August 10

Overnight Camp Chalutzim – Entering Grades 3-6
2 weeks day camp and 1 week overnight camp
 Chalutzim Bet July 2-July 20
 Day camp July 2-July 12
 Overnight camp July 13-July 20
 Chalutzim Gimmel July 23-August 10
 Day camp July 23-August 2
 Overnight camp August 3-August 10

Specialty Week Entering Grades K-6 August 13-17

Camp TEKO 2012

For more information
 please contact:
 Camp TEKO Director
 Andrea Gordon
 andrea@templeisrael.com
 or 612-374-0321

www.campTEKO.org



Temple Israel
 MINNEAPOLIS
 2324 Emerson Avenue South
 Minneapolis, MN 55405-2695
 CHANGE SERVICE REQUESTED

NON-PROFIT
 ORGANIZATION
 U.S. POSTAGE
PAID
 Twin Cities, MN
 Permit #807

Louis Gainsley Distinguished Service Award Nominations Requested

The Louis Gainsley Distinguished Service Award was established to recognize the outstanding volunteer efforts of Temple Israel members, both within Temple Israel and in the community at large. The award is an expression of appreciation for and recognition of those who meet the following criteria:

- Whose actions personify Jewish values, the essence of community and volunteerism at Temple Israel and/or in the community at large.
- Whose actions influence others to engage in lifelong learning, meaningful worship, and/or participation within the Temple community or the community at large.
- Whose exceptional and/or innovative service to Temple Israel and its community has spanned ten or more years.
- Who has, through his or her years of volunteer service, garnered the respect and admiration of the Temple Israel community.

The award recipient will be honored at our Annual Meeting in June 2012. Please submit nominations for the Louis Gainsley Distinguished Service Award before Friday, February 10th by completing the following information and returning it to Temple Israel or by contacting Michael Satterberg at 612-374-0324 or michael@templeisrael.com.

Your Name & Phone Number: _____.

I nominate _____ **for the Louis Gainsley Distinguished Service Award because**
